

Composizione/ Composition	<b>100% PL</b>
Altezza/ Width	<b>140 cm</b>
Peso/ Weight	(± 5%) <b>300 g/m2</b>
Resistenza alla luce/ Colour fastness to light	Scuri/ Dark <b>4</b>
Martindale	<b>50.000</b>
Resistenza del colore al lavaggio/ Colour fastness to washing	<b>3</b>
Ignifugo Fireproof	<b>no</b>
Idrorepellente Waterproof	<b>no</b>
Antimacchia Stain resistant	<b>si</b>

## Norme di smacchiatura/ Cleaning instructions

Tamponare tempestivamente i liquidi con panno asciutto o spazzolare lo sporco secco. / Dab promptly the fallen liquids with a dry cloth or brush gently the dry

### Macchie acquose - Bibite, caffè, vino/ Liquid stains - Drink, coffee, wine

Asportare i liquidi con carta assorbente o panno asciutto senza esercitare eccessiva pressione sul tessuto. In caso di penetrazione della macchia, strofinare con spugna umida, se necessario usare del sapone neutro da risciacquare abbondantemente con acqua tiepida e spugna pulita. / Remove the stain using blotting paper or a dry cloth and avoid any pressure on fabric. In case the stain penetrates the fabric, rub gently with a damp sponge and if necessary, use a neutral soap to be well rinsed with tepid water and a clean sponge.

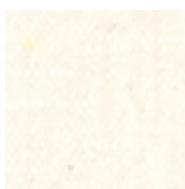
### Macchie oleose - Grasso, salse/ Oily stains - Grease, sauce

Tamponare con carta assorbente o panno asciutto senza eccessiva pressione sul tessuto. In caso di penetrazione della macchia, strofinare con spugna umida se necessario usare del sapone neutro da risciacquare abbondantemente con acqua tiepida e spugna pulita. / Dab the stain using blotting paper or a dry cloth and avoid any pressure on fabric. In case the stain penetrates the fabric, rub gently with a damp sponge and if necessary, use a neutral soap to be well rinsed with tepid water and clean sponge.

### Penna e pennarelli / Pens and drawing pens

Agire prima che si asciughi l'inchiostro, passando sulla macchia alcol diluito in acqua, lavare poi con spugna e detersivo neutro per rimuovere l'alone. / Before the ink becomes dry, pass on the stain alcohol diluted in water, wash with sponge and neutral soap to remove the mark.

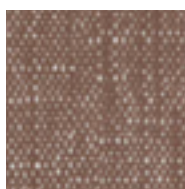
In caso di permanenza della macchia lavare in lavatrice come da norma di manutenzione. / In case marks and halos remain, it is recommended to machine wash as per cleaning instructions.



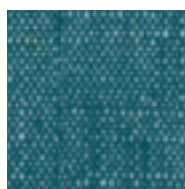
**Bilia 25**  
Pant. 11-4301



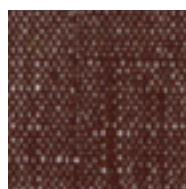
**Bilia 07**  
Pant. 16-0906



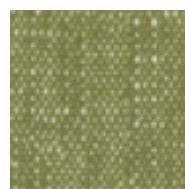
**Bilia 21**  
Pant. 17-1321



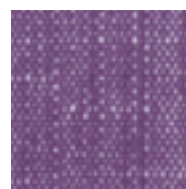
**Bilia 66**  
Pant. 17-4728



**Bilia 84**  
Pant. 19-1218



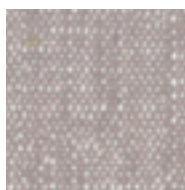
**Bilia 38**  
Pant. 16-0435



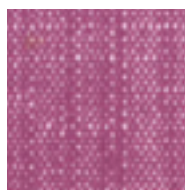
**Bilia 45**  
Pant. 18-3737



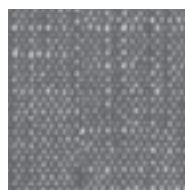
**Bilia 28**  
Pant. 14-1036



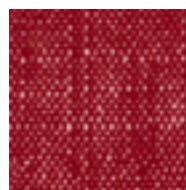
**Bilia 31**  
Pant. 16-0000



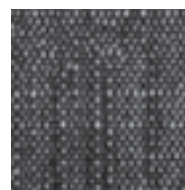
**Bilia 105**  
Pant. 18-3230



**Bilia 104**  
Pant. 17-500



**Bilia 12**  
Pant. 19-1663



**Bilia 22**  
Pant. 191-0303